



FIVE ESTUARIES OFFSHORE WIND FARM ENVIRONMENTAL STATEMENT

VOLUME 6, PART 7, ANNEX 10.3.13
FIGURE 10.33 VIEWPOINT 8 BURROW
HILL - SUFFOLK COAST PATH

Application Reference	EN010115
Application Document Number	6.7.10.3.13
Revision	A
APFP Regulation:	5(2)(a)
Date	March 2024



Project	Five Estuaries Offshore Wind Farm
Sub-Project or Package	Environmental Statement
Document Title	Volume 6, Part 7, Annex 10.3.13 Figure 10.33 Viewpoint 8 Burrow Hill - Suffolk Coast Path
Application Document Number	6.7.10.3.13
Revision	A
APFP Regulation	5(2)(a)
Document Reference	005024271-01

COPYRIGHT © Five Estuaries Offshore Wind Farm Ltd

All pre-existing rights reserved.

This document is supplied on and subject to the terms and conditions of the Contractual Agreement relating to this work, under which this document has been supplied, in particular:

LIABILITY

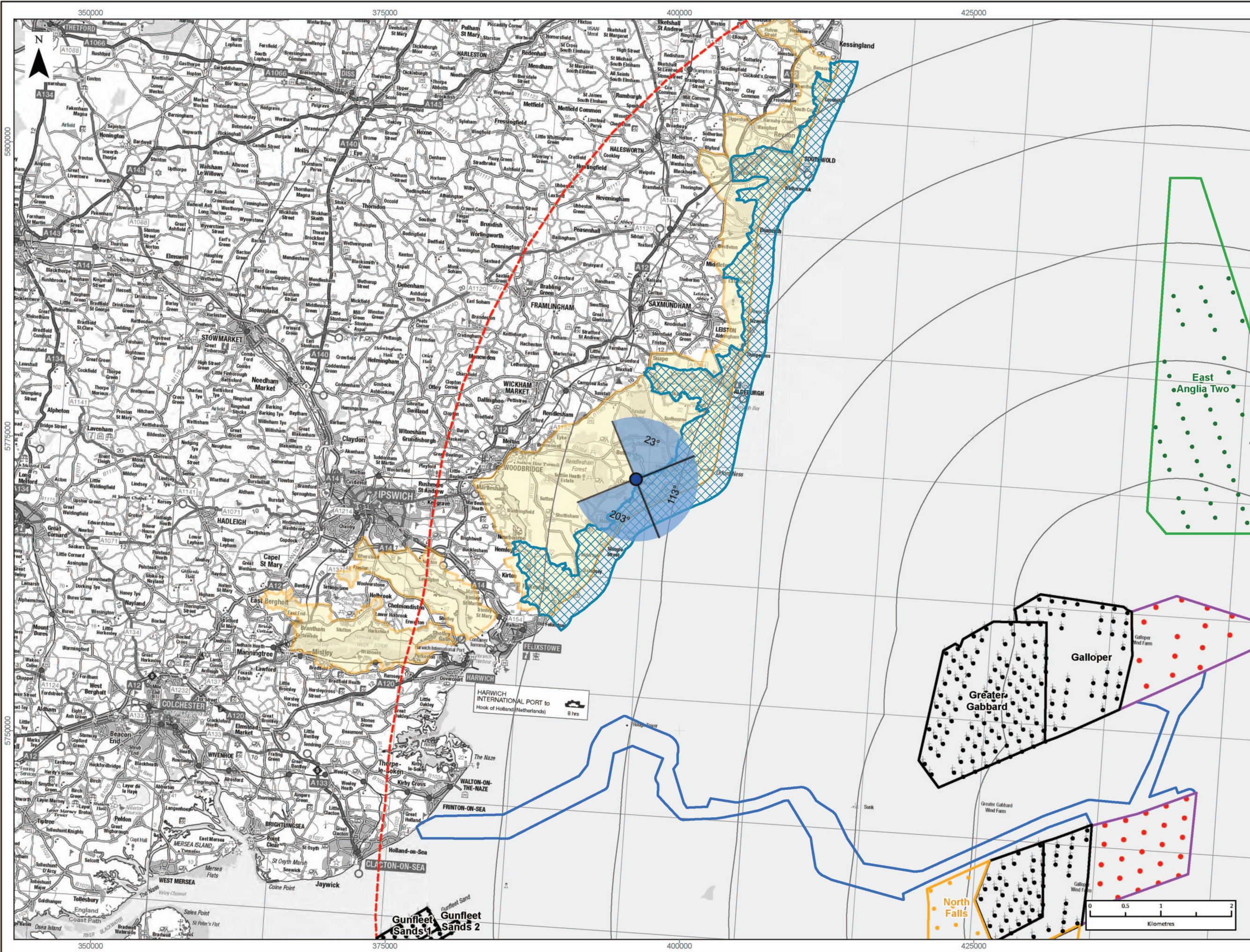
In preparation of this document Five Estuaries Offshore Wind Farm Ltd has made reasonable efforts to ensure that the content is accurate, up to date and complete for the purpose for which it was contracted. Five Estuaries Offshore Wind Farm Ltd makes no warranty as to the accuracy or completeness of material supplied by the client or their agent.

Other than any liability on Five Estuaries Offshore Wind Farm Ltd detailed in the contracts between the parties for this work Five Estuaries Offshore Wind Farm Ltd shall have no liability for any loss, damage, injury, claim, expense, cost or other consequence arising as a result of use or reliance upon any information contained in or omitted from this document.

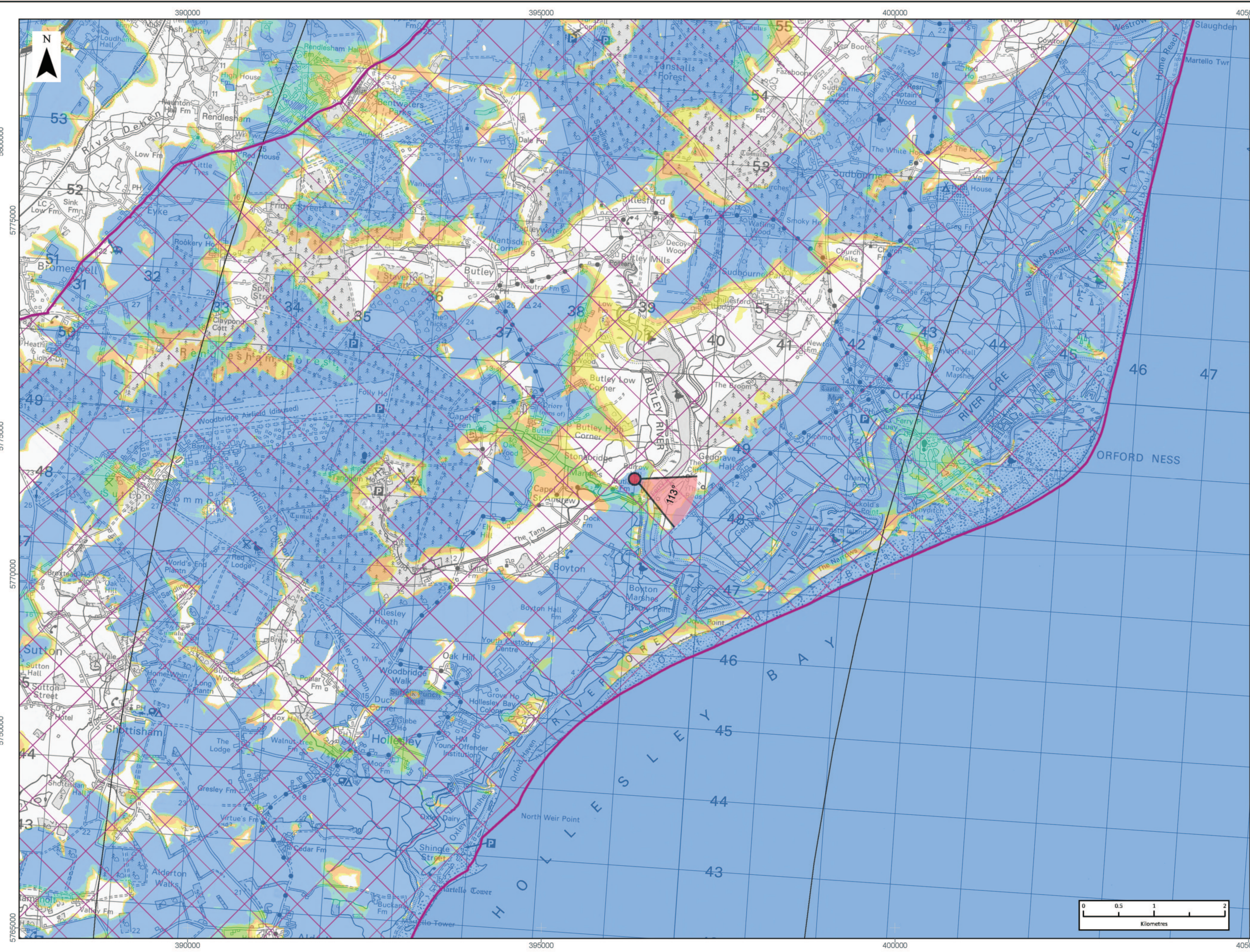
Any persons intending to use this document should satisfy themselves as to its applicability for their intended purpose.

The user of this document has the obligation to employ safe working practices for any activities referred to and to adopt specific practices appropriate to local conditions.

Revision	Date	Status/Reason for Issue	Originator	Checked	Approved
A	Mar-24	ES	OPEN	GoBe	VEOWFL



Viewpoint Location Plan Baseline Panorama (90 Degree View)
Scale: 1:300,000



Viewpoint Location Plan (53.5 Degree View)
Scale: 1:50,000

LEGEND

- 53.5 Degree Field of View
- 90 Degree Field of View
- Indicative Turbines
- Array Areas
- Offshore Export Cable Corridor
- 10km Radii
- 60km Study Area
- Suffolk Heritage Coast
- Suffolk Coast & Heaths Area of Natural Beauty (CWF Pane)
- Suffolk Coast & Heaths Area of Natural Beauty (Viewpoint Pane)
- Wind Farm Development Status
 - Operational
 - Consented
 - Pre-Application

No. of Blade Tips Theoretically Visible*

- 1 - 10
- 11 - 20
- 21 - 30
- 31 - 40
- 41

***TV Parameters**
Blade Tip: 39.5m
DTM: OS 15/150/SRTM
DTM Resolution: 10m
Observer Height: 2m
Surface Features: Excluded
Earth Curvature: Included

PROJECT TITLE:
FIVE ESTUARIES OFFSHORE WINDFARM

DRAWING TITLE:
Viewpoint Plan - VP 8
Burrow Hill (Suffolk Coast Path)

VER	DATE	REMARKS	Drawn	Checked
1	02/02/2024	For Issue	RA	SM

DRAWING NUMBER:
10.33a

SCALE: 1:50,000 PLOT SIZE: A3 DATUM: WGS84 PROJECTION: UTM31N

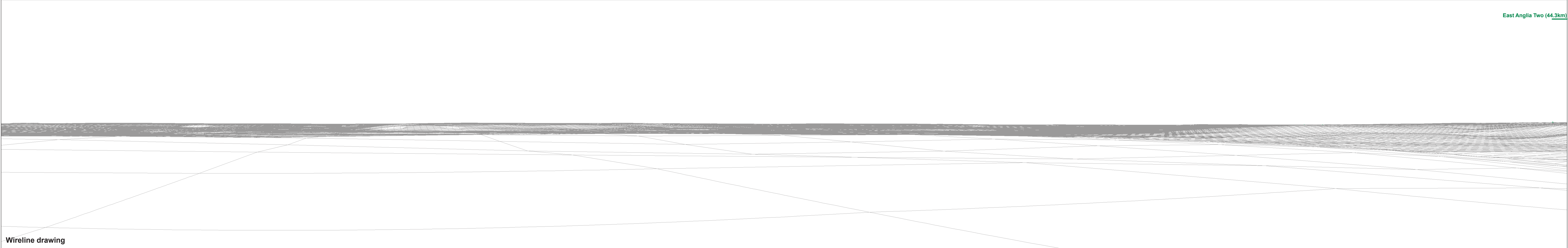
FIVE ESTUARIES OFFSHORE WINDFARM



Baseline photograph

This image provides landscape and visual context only

[East Anglia Two \(44.3km\)](#)



Wireline drawing

OS reference: 639001 E 248468 N
Eye level: 14.9 mAOD
Direction of view: 23°
Nearest turbine: 44.8 km
VE Array Area: 43.5 km

Horizontal field of view: 90° (cylindrical projection)
Principal distance: 522 mm
Paper size: 841 x 297 mm (half A1)
Correct printed image size: 820 x 130 mm

Camera: Canon EOS 6D
Lens: Canon EF 50mm f/1.4
Camera height: 1.5 m
Date and time: 24/09/2021 14:51

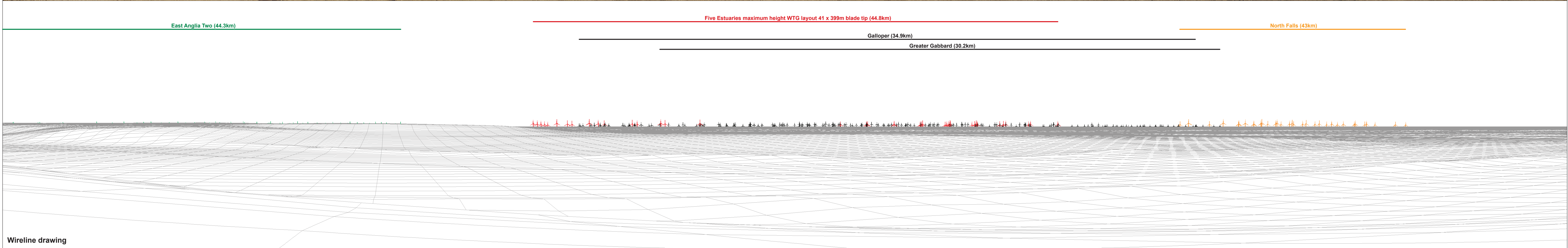
Figure 10.33b
Viewpoint 8: Burrow Hill (Suffolk Coast Path)
Five Estuaries

© Crown copyright, Ordnance Survey All rights reserved (2023). Licence number 0100031673



Baseline photograph

This image provides landscape and visual context only



Wireline drawing

OS reference: 639001 E 248468 N
 Eye level: 14.9 mAOD
 Direction of view: 113°
 Nearest turbine: 44.8 km
 VE Array Area: 43.5 km

Horizontal field of view: 90° (cylindrical projection)
 Principal distance: 522 mm
 Paper size: 841 x 297 mm (half A1)
 Correct printed image size: 820 x 130 mm

Camera: Canon EOS 6D
 Lens: Canon EF 50mm f/1.4
 Camera height: 1.5 m
 Date and time: 24/09/2021 14:51

Figure 10.33c
 Viewpoint 8: Burrow Hill (Suffolk Coast Path)

Five Estuaries

© Crown copyright, Ordnance Survey All rights reserved (2023). Licence number 0100031673

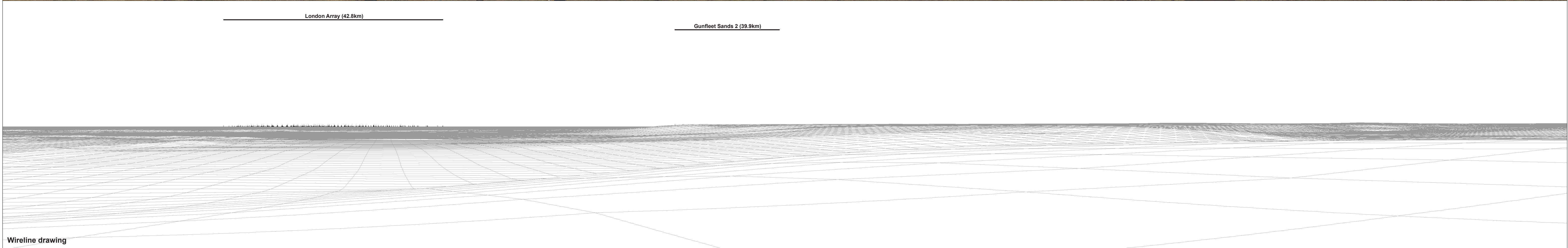


Baseline photograph

This image provides landscape and visual context only

London Array (42.8km)

Gunfleet Sands 2 (39.9km)



Wireline drawing

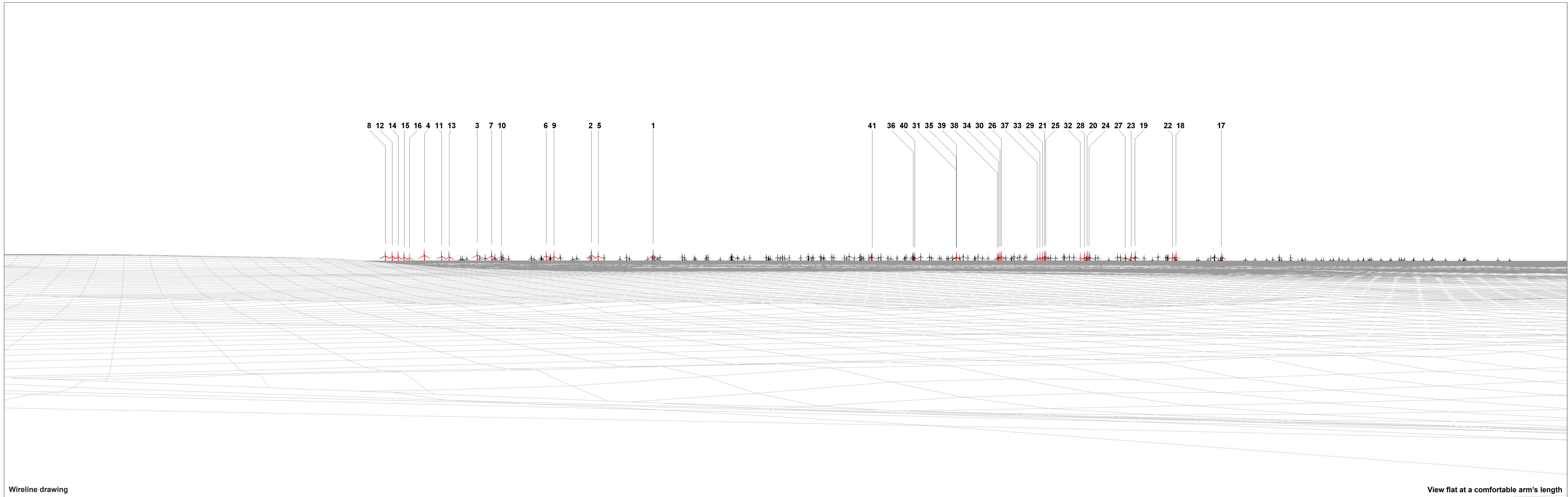
OS reference: 639001 E 248468 N
 Eye level: 14.9 mAOD
 Direction of view: 203°
 Nearest turbine: 44.8 km
 VE Array Area: 43.5 km

Horizontal field of view: 90° (cylindrical projection)
 Principal distance: 522 mm
 Paper size: 841 x 297 mm (half A1)
 Correct printed image size: 820 x 130 mm

Camera: Canon EOS 6D
 Lens: Canon EF 50mm f/1.4
 Camera height: 1.5 m
 Date and time: 24/09/2021 14:51

Figure 10.33d
 Viewpoint 8: Burrow Hill (Suffolk Coast Path)

Five Estuaries



Wireline drawing

View flat at a comfortable arm's length

OS reference: 639001 E 248468 N
 Eye level: 14.9 mAOD
 Direction of view: 113°
 Nearest turbine: 44.8 km
 VE Array Area: 43.5 km

Horizontal field of view: 53.5° (planar projection)
 Principal distance: 812.5 mm
 Paper size: 841 x 297 mm (half A1)
 Correct printed image size: 820 x 260 mm

Camera: Canon EOS 6D
 Lens: Canon EF 50mm f/1.4
 Camera height: 1.5 m
 Date and time: 24/09/2021 14:51

Figure 10.33e
 Viewpoint 8: Burrow Hill (Suffolk Coast Path)
 Five Estuaries



Baseline Photograph (operational offshore wind turbines have been rendered into this view)

View flat at a comfortable arm's length

OS reference:	639001 E 248468 N	Horizontal field of view:	53.5° (planar projection)	Camera:	Canon EOS 6D
Eye level:	14.9 mAOD	Principal distance:	812.5 mm	Lens:	Canon EF 50mm f/1.4
Direction of view:	113°	Paper size:	841 x 297 mm (half A1)	Camera height:	1.5 m
Nearest turbine:	44.8 km	Correct printed image size:	820 x 260 mm	Date and time:	24/09/2021 14:51
VE Array Area:	43.5 km				

Figure 10.33f
Viewpoint 8: Burrow Hill (Suffolk Coast Path)

Five Estuaries

© Crown copyright, Ordnance Survey All rights reserved (2023). Licence number 0100031673



Photomontage: Proposed Development

View flat at a comfortable arm's length

OS reference: 639001 E 248468 N
 Eye level: 14.9 mAOD
 Direction of view: 113°
 Nearest turbine: 44.8 km
 VE Array Area: 43.5 km

Horizontal field of view: 53.5° (planar projection)
 Principal distance: 812.5 mm
 Paper size: 841 x 297 mm (half A1)
 Correct printed image size: 820 x 260 mm

Camera: Canon EOS 6D
 Lens: Canon EF 50mm f/1.4
 Camera height: 1.5 m
 Date and time: 24/09/2021 14:51

Figure 10.33g
 Viewpoint 8: Burrow Hill (Suffolk Coast Path)

Five Estuaries

© Crown copyright, Ordnance Survey All rights reserved (2023). Licence number 0100031673



F I V E 
ESTUARIES
OFFSHORE WIND FARM

PHONE
EMAIL
WEBSITE
ADDRESS

0333 880 5306
fiveestuaries@rwe.com
www.fiveestuaries.co.uk

COMPANY NO

Five Estuaries Offshore Wind Farm Ltd
Windmill Hill Business Park
Whitehill Way, Swindon, SN5 6PB
Registered in England and Wales
company number 12292474

